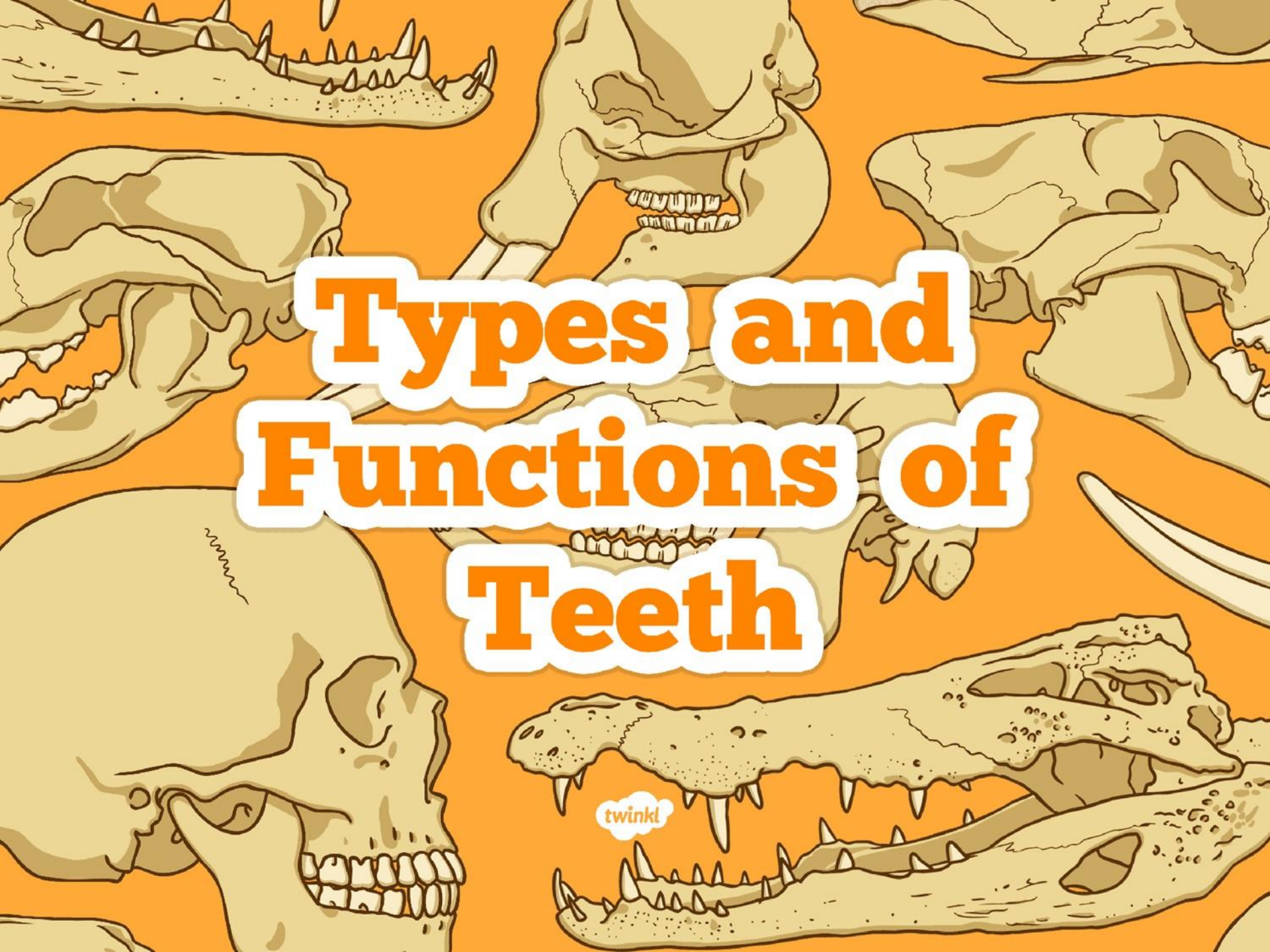




# Science

## Animals Including Humans

The background is a vibrant orange color, populated with several detailed illustrations of animal skulls and jaws. These include a crocodile's head with sharp, pointed teeth, a primate-like face with a mix of incisors and molars, a rodent's skull with prominent incisors, and a large, powerful jaw with many sharp, conical teeth. The central text is overlaid on these illustrations.

# **Types and Functions of Teeth**

twinkl

# Aim

- I can identify the types and functions of teeth.
- I can identify similarities and differences related to scientific ideas.

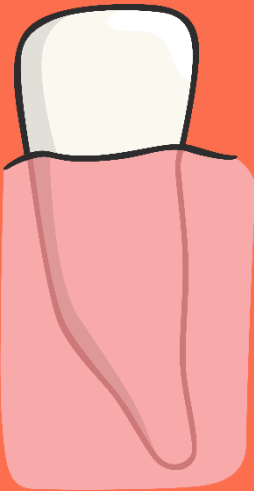
# Success Criteria

- I can identify the function of teeth in humans.
- I can match the types and functions of teeth.
- I can identify the types and functions of teeth.
- I can identify similarities related to scientific ideas.
- I can identify differences related to scientific ideas.

# Types Of Teeth



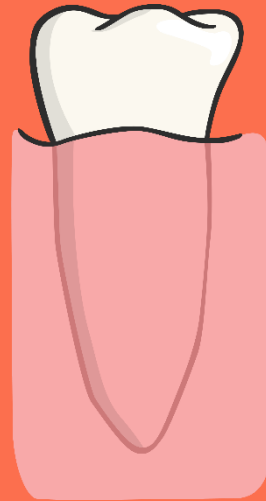
Match the types of teeth with their names.



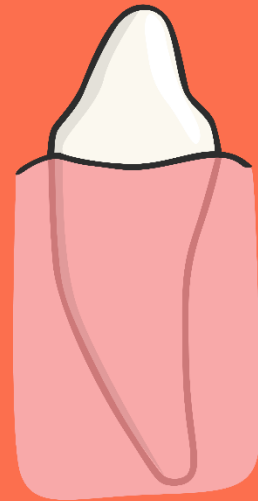
Molar



Canine



Incisor



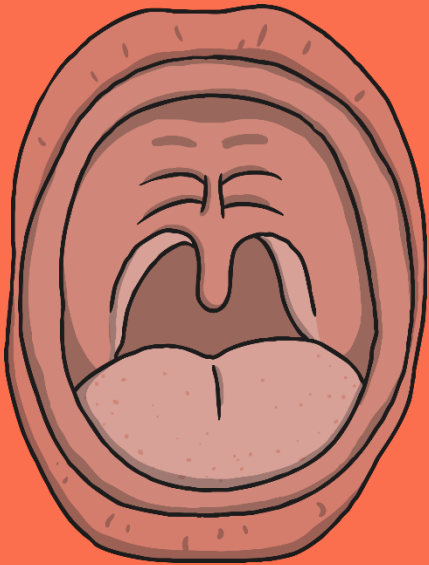
Premolar



# Where Are They?



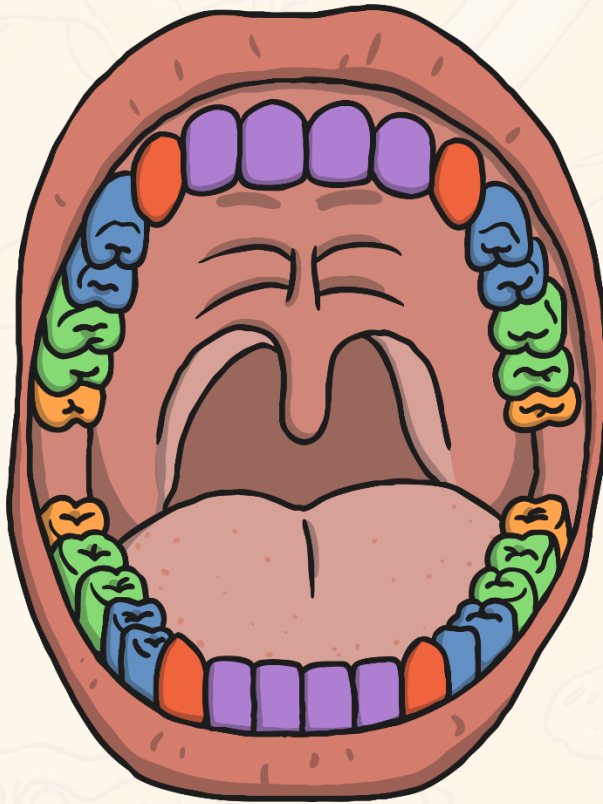
Were you correct?



[Click here  
for answers!](#)



# Functions of Teeth



-  Canine
-  Molars
-  Premolars
-  Incisors
-  Wisdom Teeth

Discuss the following questions with your talk partner:

**Why do we have different types of teeth?**

**What is their purpose?**

# Incisors

## How many?

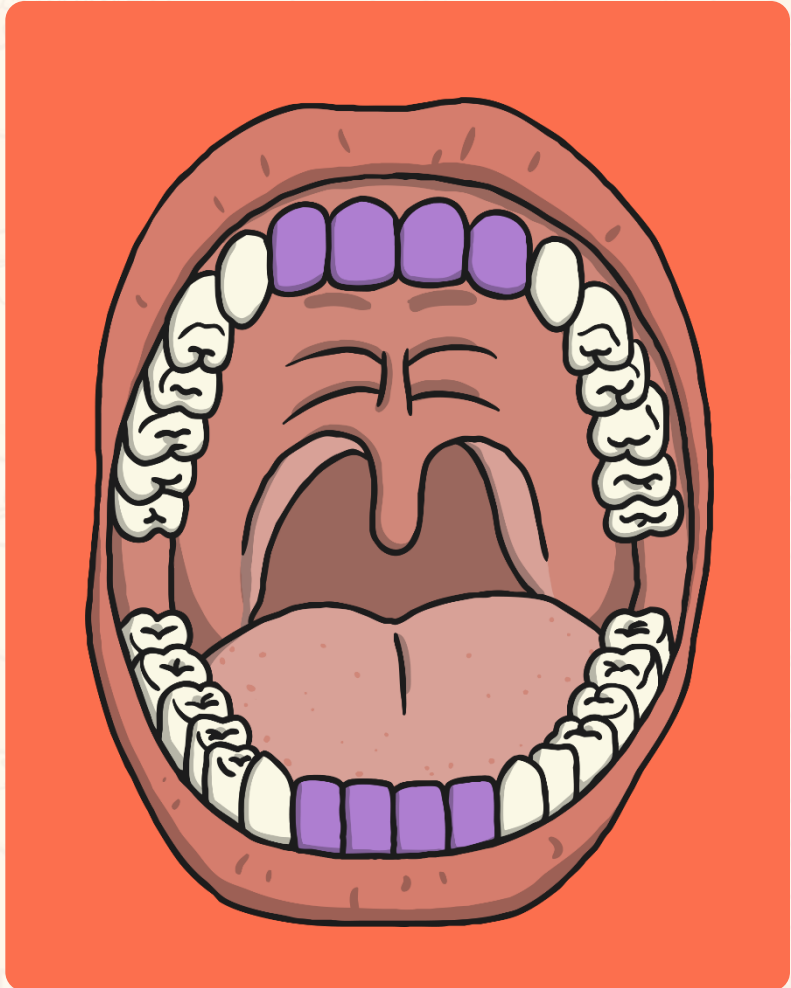
Humans have 8 incisors altogether; 4 in the upper jaw and 4 in the lower jaw.

## Shape

Incisors are shovel-shaped.

## Function:

Used for biting and cutting food.



# Canines

## How many?

Humans have 4 canine teeth, one in each quarter of the mouth, on either side of the incisors.

## Shape

Canines are pointy.

## Function:

Used for tearing and ripping food.





# Premolars

## How many?

Humans have 8 premolars, two in each quarter of the mouth. They are between the canine tooth and the molars.

## Shape

Small and flat

## Function:

Holding and crushing food.



# Molars

## How many?

Humans have 8 molars, two in each quarter of the mouth. They are at the back of the mouth behind the premolars.

## Shape

Large and flat

## Function:

Grinding food



# Wisdom Teeth

## How many?

Humans can have up to 4 wisdom teeth, although not everyone has them. There is 1 in each quarter of the mouth behind the molars.

## Shape

Large and flat (they are just a third molar)

## Function:

Does not have one now! Some scientists think that human ancestors needed a third molar to help grind down plant tissue from thicker leaves when humans still ate them. Since the diet of humans has changed we don't need them.

As the human diet changed our mouths have become smaller. This is the reason why many people have their wisdom teeth extracted – taken out – as there is no real room for a wisdom tooth so it tends to grow inward and can become a problem.



# Matching Types and Functions



## Types and Functions of Teeth

Diagram of a human mouth showing the upper and lower teeth. Lines connect specific teeth to boxes for labeling.

**Top Left:**

Name of tooth: \_\_\_\_\_

Function: \_\_\_\_\_

**Top Right:**

Name of tooth: \_\_\_\_\_

Function: \_\_\_\_\_

**Bottom Left:**

Name of tooth: \_\_\_\_\_

Function: \_\_\_\_\_

**Bottom Right:**

Name of tooth: \_\_\_\_\_

Function: \_\_\_\_\_

**Bottom Center:**

Name of tooth: \_\_\_\_\_

Function: \_\_\_\_\_

**Key:**

- Canines
- Molars
- Premolars
- Incisors
- Wisdom Teeth

The boxes below explain the names and function of the types of teeth.

Cut out the boxes and stick them next to the correct arrow.

Incisor	Molar	Biting and cutting food	Grinding food
Wisdom Tooth	Canine	Tearing and ripping food	No function anymore
Premolar	Holding and crushing food		



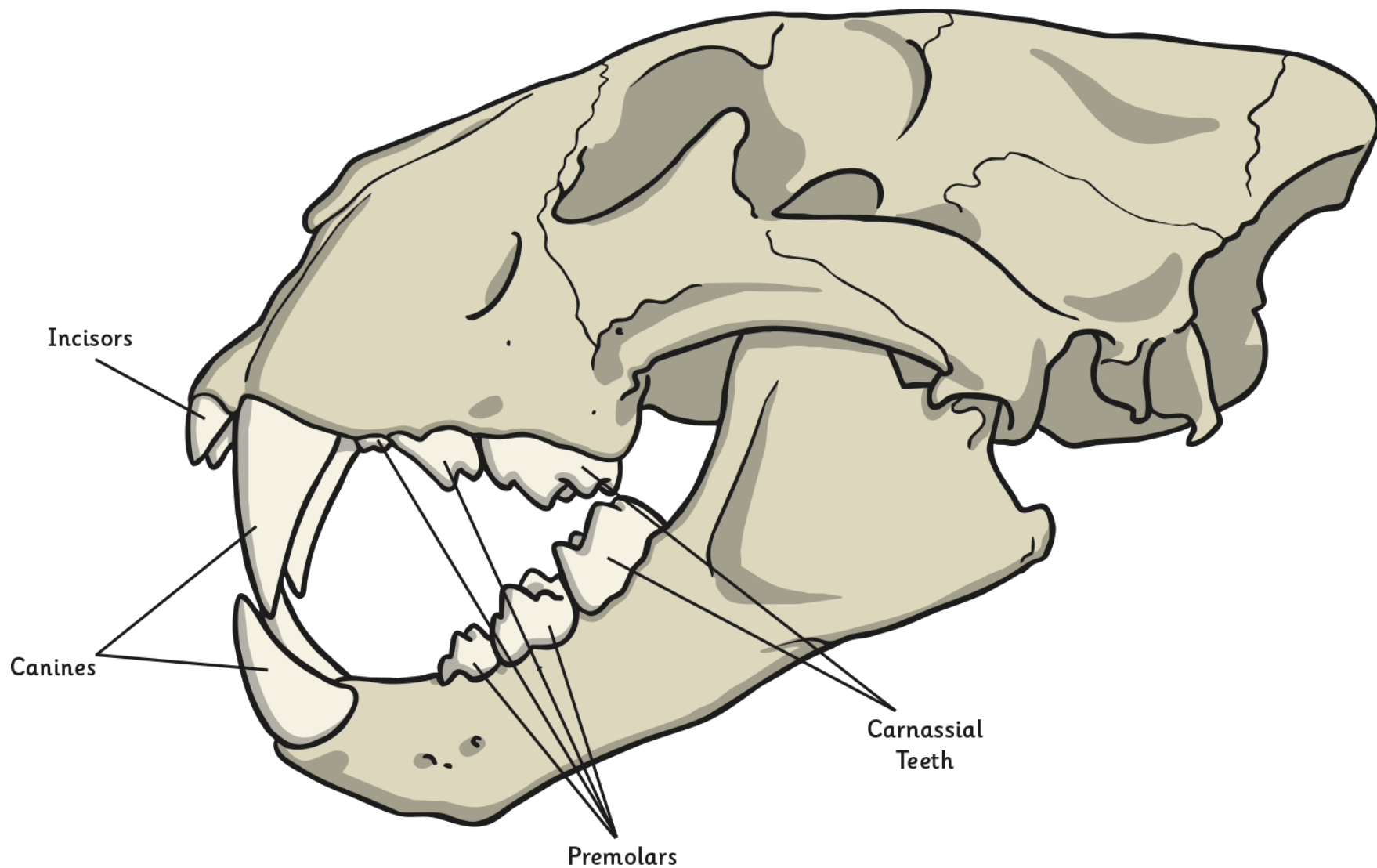
# Animal Teeth



Do other animals have the same type of teeth as humans?

Why? Why not?





Lion skull. Click again to go back.

# Comparing Teeth



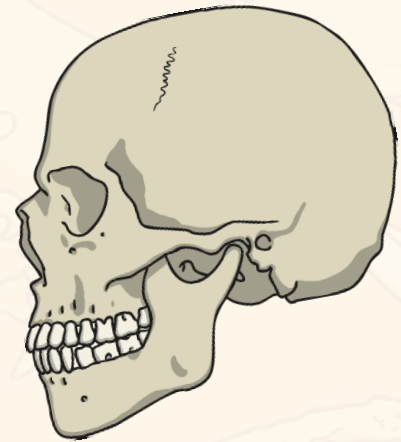
You will now look at a range of different animals skulls which you will need to compare and contrast.

Read the questions carefully and write down answers.

You are working as a group but you will write your answers on **your own worksheet**.

**Discuss ideas** with your group and listen to each other. This is really important to your learning and developing your ideas.

However, if you disagree with other members of your group you can write the answer you think is correct. You **do not** all need to write the same answer.



# Aim



- I can identify the types and functions of teeth.
- I can identify similarities and differences related to scientific ideas.

# Success Criteria

- I can identify the function of teeth in humans.
- I can match the types and functions of teeth.
- I can identify the types and functions of teeth.
- I can identify similarities related to scientific ideas.
- I can identify differences related to scientific ideas.



