



Science

Animals Including Humans

The background features five glasses on a wooden surface. From left to right: a glass of dark brown liquid, a glass of light blue liquid, a glass of orange liquid, a glass of light blue liquid, and a glass of green liquid. Each glass contains a white ice cube. The text 'Tooth Decay Enquiry Part 2' is overlaid in the center in a bold, orange, bubbly font with a white outline.

Tooth Decay Enquiry Part 2

Aim

- I can make careful observations, appropriately record my results and use them to develop further investigations.

Success Criteria

- I can make systematic observations.
- I can record my findings using appropriate scientific language.
- I can use results to make predictions for new values and/or raise further questions resulting from my enquiry/test.

Corrections



Do you need to make any corrections before conducting your enquiry/test?
If so, do so now before you start your enquiry.

Also:

- Make sure you have listed all the equipment you will need.
- Re-read your instructions and make sure they are clear.
- Ensure that you have completed all sections if you did not do so in the previous lesson.



Tooth Decay Scientific Enquiry



Now we get to the fun part! Setting up the enquiry / test!

Make sure that:
There is the same amount of liquid in each container.

Make sure that:
You follow your instructions. If you find you missed a step – add it in!

Make sure that:
Everyone in the group takes part.

Make sure that:
You remember to include a control group if you are conducting a fair test.

Make sure that:
You are careful when placing the eggs. If they are broken then it will affect your results.

Make sure that:
If you use any equipment you have not listed, add it in!

Observations

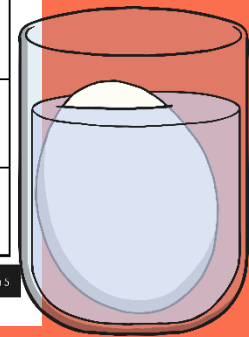
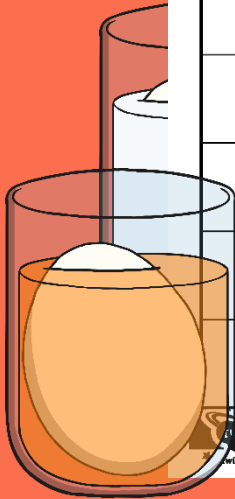
Why do we need to make careful observations and record them accurately?

How would it affect our conclusion if we did not record accurately?

Tooth Decay Recording

Observe carefully and record what is happening to the hard boiled eggs each day:

| Day 1 | Day 2 | Day 3 | Day 4 | Day 5 |
|-------|-------|-------|-------|-------|
| | → | → | → | → |
| | → | → | → | → |
| | → | → | → | → |
| | → | → | → | → |
| | → | → | → | → |



Recording Observations



Each day each group will check on their eggs.

We will tick off the days below to keep track:

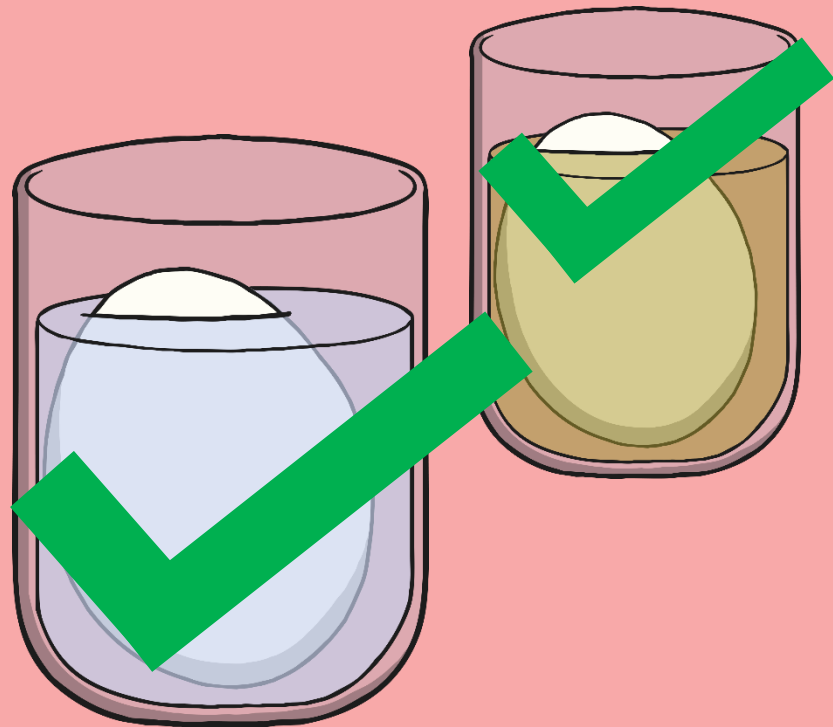
Day One:

Day Two:

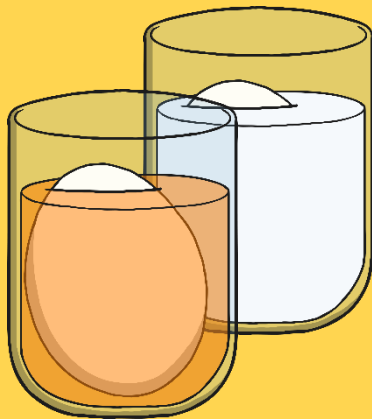
Day Three:

Day Four:

Day Five:



Reporting Findings



Tooth Decay Reporting

Look at the observations you made on your **Tooth Decay Recording Activity Sheet** and complete the following:

Was your prediction correct? _____

Conclusion (Write here what you found from your observations, what effect the drink(s) had and what you have learnt from the enquiry/test.)

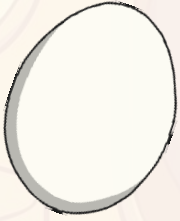
What further predictions can you make as a result of your findings?

What would you do differently next time?



Science | Year 4 | Animals Including Humans | Tooth Decay Enquiry Part 2, Lesson 5

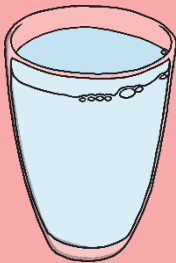
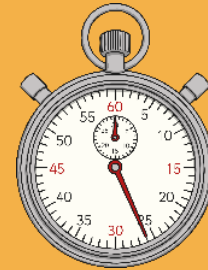




Changes



What have you learnt from your enquiry/test?
What would you do differently next time?



Aim



- I can make careful observations, appropriately record my results and use them to develop further investigations.

Success Criteria

- I can make systematic observations.
- I can record my findings using appropriate scientific language.
- I can use results to make predictions for new values and/or raise further questions resulting from my enquiry/test.

